

Hawthorn Elementary
NEWSLETTER

10 Hawthorne Street • Dartmouth, NS • B2Y 2Y3 Tel # (902) 464-2048
Website: Haw.hrce.ca • Email: hawthorn@hrce.ca • Twitter: @HawthornElem



February 2022



Dear Families,

We welcome February and the beautiful winter weather as it invites us to get outside and enjoy the snow. The past couple of weeks of January allowed us to get back into the routines of school and be together again. We are fortunate to have Mr. Church, an HRCE Art Specialist Teacher, join our classes and he will be with us for a few more weeks. February is African Heritage Month and this year the provincial theme is *Through Our Eyes: The Voices of African Nova Scotians*, which recognizes the legacies of people of African descent through first voice, lived realities, and experiences. The month of February is also Registration Month and you will see information included in the newsletter. We are also encouraging acts of kindness the week of Valentine's Day. Stay tuned!

Sincerely,

Ms. Gourlay and Ms. Dunn

Parking at School

A reminder to follow street signage for both 'no stopping' and 'no parking' around the school. Please also keep in mind that we do have a bus that drops off students in the morning and picks up students in the afternoon. For safety reasons, we ask that there is room for the bus to pull up at the curb in front of the school and so the flow of traffic along Hawthorne Street is not blocked. Thank you in advance for your understanding and cooperation.

Ongoing Health Measures

We continue to ask that everyone reference the daily checklist before coming to school. This tool should be used by families before sending their children to school. Individuals need to stay home when they are ill, even if their symptoms are mild. Anyone who is unsure whether they or their child should self-isolate is to contact 811. All staff will self-monitor daily for symptoms of COVID-19 at home using the checklist. Individuals who develop symptoms consistent with possible COVID-19 infection cannot stay at school, even if the symptoms are mild. Families will be notified of students who become symptomatic and will isolate while awaiting pick-up. Please have a plan in place in case we need you to pick up your child from school.

Primary & PrePrimary Registration

Do you have a child who is eligible to start Pre-Primary or Grade Primary this fall? **It's time to register for school!** HRCE begins the registration process in February so that schools are ready to welcome your child in September. You can find everything you need to get started here: hrce.ca/registration.

Children who are enrolled in Pre-Primary do not need to re-register for primary.

To limit non-essential visitors to schools and for the shared health of our community, families are required to register online. If you have a child who will be 4 as of December 31, 2022, they are eligible for Pre Primary. If you have a child who will be 5 as of December 31, 2022, they are eligible for Primary. Please share this information with your friends and neighbours with children who will be 4 or 5 years old by December 31.

Steps for registration:

1. Complete all sections of the registration form.
2. The following documents must also be provided and will have to be scanned and attached to your email as well:
 - a. Proof of address which may include the following currently dated documents: i.e. Utility bill, Phone, hydro, lease agreement.
 - b. Birth certificate or passport
 - c. Medical card info including health number and expiry date
 - d. Please note in the body of the email if there are any special/medical needs that your child may have so that we are better able to make sure we have all the support your child may need when starting school.
3. Email all completed documents to hawthorn@hrce.ca and someone from the school will be in contact with you once the registration information is processed.

If you are unable to scan documents please contact the office at (902)464-2048 to see how we can be of help.

Need help with online registration? Our Parent Navigators are ready to support you!

- Missy Searl: lsearl@hrce.ca or 902-464-2000 x4362
- Zachary Garcia: zachary.garcia@hrce.ca or 902-464-2000 x4361

What's Pre-Primary all about?

Check out our [Welcome to Pre-Primary](#) site.

What does Grade Primary look like?

Visit our [Welcome to Primary](#) site.

Registration is not complete until the school confirms acceptance. Due to the influx of registrants this may take some time. Please be assured we will get back to you as soon as possible.

New to the area: if you are aware of any families new to the Hawthorn area please direct them to contact the school at (902) 464-2048 and we will ensure they get their child(ren) registered in a timely manner. Again, registration is not complete until confirmed by the school.

Parents having a work/study permit: Parents/Guardians must have a valid work/study permit in order for your child(ren) to attend HRCE schools. This must be included with the above information in order to register your child(ren). Additional information can be found at HRCE's International Student's page. <https://www.hrce.ca/about-hrce/school-administration/international-students>

The designated Junior High Schools for Hawthorn Grade 6 students are Dartmouth South Academy and Bicentennial depending upon your home address. Registration information for these 2 schools will be shared with Grade 6 families soon. Registration to any other Junior High will require an Out of Area Request. Parents/guardians may obtain an Out-of-Area Request form at their child's neighbourhood school. Once completed, parents/guardians must forward the Out-of-Area Request form to the requested school on the first school day in April starting at 8:00 a.m. Alternatively, parents/guardians may complete the online Out-of-Area Request form at www.hrce.ca beginning on the first school day in April at 8:00 a.m. The electronic submission is automatically sent to the receiving school.

Message from Schools Plus

February is a fantastic time for a gentle reminder about safely wearing your backpack.

- it's that time of year when our load is heavy(figuratively and literally)
- with colder weather comes additional clothing and gear
- slippery footing is often a concern for our children in the winter months
- whether short or long walks-comfort and safety is still important!
- wear both of the backpack straps firmly over your shoulders so that your backpack is snugly against your back
- a proper sized backpack for your child is important too ([please reach out to Schools Plus if you need help with a new backpack](#))
- heavy items against your body and lighter items on the outside or top of your child's backpack.
- See the Youtube link for a short demonstration -
- https://www.google.com/search?q=how+to+properly+wear+a+backpack&rlz=1CAEZTK_enCA989&oq=how+to+properly+wear+your+ba&aqs=chrome.2.69i57j0i22i30l6j0i390l3.17468j1j15&sourceid=chrome&ie=UTF-8&safe=active&ssui=on#kpvalbx=_tfXvYc6gld6uqtsPslWYgAk27

Outdoor Learning Space

Our outdoor learning space is complete and is a great area for our classes to enjoy fresh air and continued learning. The area has six picnic tables and benches on the sides. We are excited to start using this space and implementing engaging outdoor learning opportunities.



Dressing for the weather

We will continue to go outside a lot and winter is here so please make sure your child is well equipped for whatever weather the day might bring. Students should be wearing boots, snow pants, hats and mitts every day, and carrying extra clothes, a pair of dry socks, and mitts in their backpacks.

Lunch Monitors

We are reaching out in search of lunch monitors. If you have or are willing to have a criminal record check/vulnerable sector and child abuse registry done and are able to help, please phone 902-464-2048 and we can begin the process. Even if you are only available certain days of the week your time is appreciated. Thank you!

Dogs on the school grounds

We have had some concerns from the school community in regards to dogs on the school grounds. We are reminding families NOT to bring dogs onto school property. We realize that combining a dog walk with your child's trip to and from school is convenient and environmentally responsible. Although these pets are usually playful and harmless, the presence of dogs on the school grounds represents a potential health and safety issue for several reasons.

- some children are afraid of dogs
- a number of children have allergies
- we have no way to monitor any individual dog's training or behaviour and even the tamest pet may react unexpectedly when surrounded by curious children or when inadvertently startled

Hawthorn Elementary thanks you for helping us to maintain a safe environment by not bringing your dog onto school property. As a suggestion, you could make arrangements with your child(ren) to meet you on the sidewalk if you are walking the dog to and from the school. Thank you for your cooperation!

School Advisory Council (SAC)

The next School Advisory Council (SAC) meeting will be February 7th, at 6 pm via Zoom.

The SAC is a welcome place for any concerns that you may have regarding the school environment or curriculum. The SAC is a volunteer organization that receives its authority from the Nova Scotia Education Act. Comprised of parents, community members and school staff members, the SAC discusses and decides on policies. We provide a voice to influence decisions that impact student learning and provide principals and regional centres for education with advice that reflects the best interests of students. ***We need community members for this committee.*** This is a great way for grandparents, former Hawthorn parents, or any community member to add their voice and be involved. Our meetings are generally 30 minutes. The SAC Handbook is also available on the school website under “Our School” / “School Advisory Council”. Please let us know if you would like a link to the meeting. Additionally, if you are interested in learning more, please do not hesitate to reach out to the Chair, Alexis Carter Malloch SAC, by email : hrce-sac-haw@gnspes.ca

Home and School Association (HSA)

Home and School Association is a volunteer, non-profit organization of parents and school staff. Membership is free and open to any interested parent/guardian or staff member. Upcoming Virtual Home and School Association Meeting: Monday, February 7th at 7pm. All are welcome! Please contact us if you like the link to our meeting, Hawthorn@hrce.ca

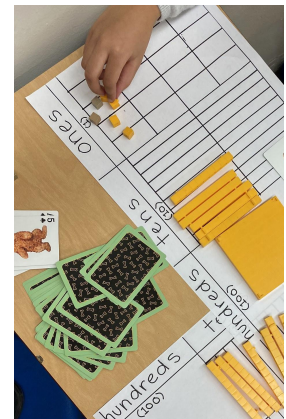
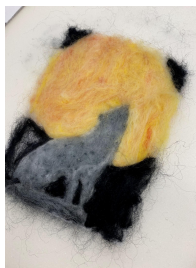
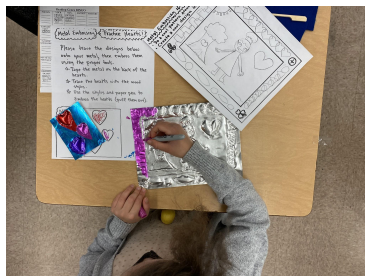
Dates to Remember:

- February 7 @ 6pm- SAC Meeting (virtual)
- February 7 @ 7pm- HSA Meeting (virtual)
- February 18-PD Day (No School for Students)
- February 21- No School (Heritage Day)
- March 14-18-March Break
- March 23- Assessment and Evaluation Day (No School for Students)

Reminders

- Please, do not send nut or peanut products to school.
- At this time, access to the building is limited to essential staff only. Please ring the doorbell and we can assist you.
- Doors open for students at 8:40 am. Teachers begin instruction at 9am. Please arrive on time.

A look at what's happening at Hawthorn!



Plans for Inclement Weather

The Halifax Regional Centre for Education takes great care when making the decision to alter the normal operations of schools in the event of severe or inclement weather. Decisions on school closures and/or bus cancellations are posted on the board's website at www.hrce.ns.ca, on Twitter at [www.twitter.com/HRCE_Official](https://twitter.com/HRCE_Official), recorded on 464-INFO (4636) and communicated to all local radio stations. You can also receive notice of school bus cancellations by e-mail or text message by following the link on the front page (left side) of the HRCE website. If you are interested in learning more on how decisions regarding closures and cancellations are made, visit <https://www.hrce.ca/about-our-schools/parents/inclement-weather>

Guidelines for school and/or bus cancellations due to inclement weather

Nova Scotia winter weather can change quickly and can be challenging to predict. This document outlines the steps we take when deciding whether to cancel school and/or bussing.

A 6:00 am announcement could be:

- All schools are closed for the day

OR

- Some schools (either individually or by family) are closed for the day

OR

- All schools are open, but some or all busses are not operating for the day

OR

- All schools are delayed in opening by 2 hours

If weather deteriorates, or is forecast to worsen throughout the morning

An 11:00 am announcement could be:

- Bussed students will be picked up 2 hours earlier than their regular dismissal time

AND

- Walking students will be dismissed at their regularly scheduled lunch hour

Remember:
Parents/guardians always have the right to keep their child home from school if they believe that the travelling conditions are unsuitable.

How does Halifax Regional Centre for Education (HRCE) decide on school and/or bus cancellations?

By 4:30 am, HRCE staff begin to gather information from:

- A contracted weather service that provides radar and satellite imagery, real-time road conditions and weather warnings;
- A meteorologist who provides forecast details, level and type of precipitation and impact on road conditions;
- HRCE's three transportation service providers, who provide updates on road conditions in their area;
- Municipal and provincial transportation staff; and
- Other local weather services, including Environment Canada and the Weather Network.

By 5:30 am, HRCE staff make recommendations to the Regional Executive Director (or designate), who then makes the final decision.

This decision is communicated by 6:00 am.

Halifax
Regional Centre for Education

Where can cancellation information be found?
Website: www.hrce.ca Twitter: @HRCE_NS Phone: 902-464-INFO (4636) Local media outlets
Subscribe to email/text notifications at www.hrce.ca